

AMS Device Manager helps avoid unnecessary downtime with a window into the health of intelligent field devices. It fully implements predictive diagnostics to improve plant availability and reduce maintenance costs. Based on real-time condition data from your intelligent field devices, you can identify, troubleshoot, and resolve device issues remotely and efficiently.

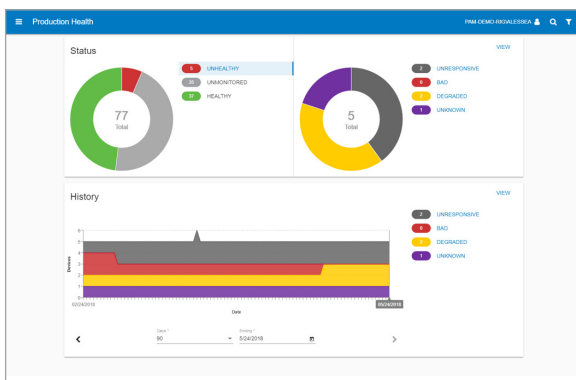
Make informed decisions with the ability to:

- View device health, calibration status, and project tracking from anywhere with browser-based AMS Device View.
- Automatically synchronize field changes from AMS Trex with asset database.
- Configure and calibrate all your devices using one software application.

AMS Device View Health Overview

AMS Device View extends your AMS Device Manager system so you can quickly see which devices need maintenance and can view recommended actions from the manufacturer – from any place that there is a browser connection.

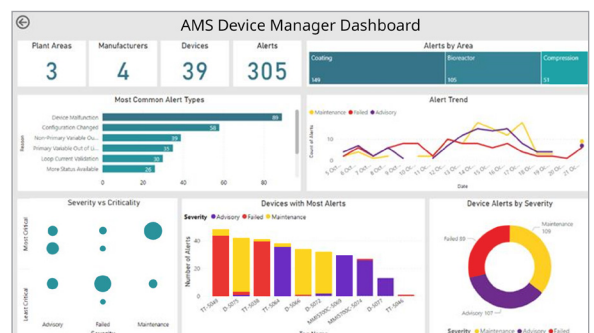
AMS Device View provides Read or Read/Write privileges in addition to permissions set in AMS Device Manager User Manager ensuring secure access from anywhere.



Extend Smart Device Data Across more Applications

By leveraging AMS Device Manager Data Server, users can replicate their AMS Device Manager system data outside the process control network – securely extending this data into both Emerson and third-party destinations like plant historians, control systems, data lakes, visualization and dashboard applications, advanced analytics and more.

This allows users to liberate data already being collected from smart devices throughout their site, like their valves and measurement instrumentation, and put this data to use elsewhere to create a more data-driven maintenance practice and help deliver on digital transformation and reliability initiatives.



Simplify Intelligent Multi-Vendor, Multi-Protocol Field Device Management Based on Real-Time Diagnostic Data

Effortlessly integrate and oversee all smart devices associated to a near-endless range of host systems—whether from Emerson systems like DeltaV™, Ovation™, or from other automation manufacturers' DCS, SIS, and PLC environments.



HART-IP™



WirelessHART™



Comprehensive Asset Management Across More Applications

Standardize field device management by integrating AMS Device Manager to non-Emerson Control and Safety systems using HART-IP open protocol.

HART-IP is a simple-to-use, open technology that allows host systems and asset management applications to integrate with HART® enabled devices for better diagnostics and device management. It allows large amounts of data to be transferred efficiently through various transmission mediums (copper, fiber, radio).

The HART-IP Interface extends AMS Device Manager for diagnostics, configuration, calibration, and documentation activities of HART devices connected to third-party systems with HART-IP server. With the HART-IP Interface, customers achieve a cost-effective solution for remote configuration and diagnostics without the added expense of multiplexer installation and wiring. The HART-IP Interface is part of Emerson's commitment to develop applications that easily integrate with new and existing equipment from manufacturers.

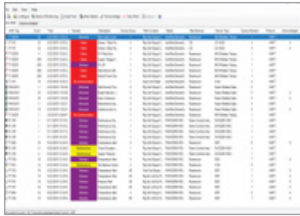
The HART-IP Interface is available with AMS Device Manager version 14.5 and higher.

Supported HART-IP Host Systems:

- ControlLogix
- Doosan Controller
- FB3000
- HImax
- Honeywell FDM
- Honeywell OneWireless
- Open Enterprise
- Phoenix Contact HART Multiplexer
- Schneider M580
- Smart Embedded Systems Multiplexer
- smartLink HW-DP
- smartLink SW-HT
 - Allen-Bradley ControlLogix
 - Siemens ET 200
 - Schneider M580
 - Stahl IS1+
 - Turck
- Tricon CX

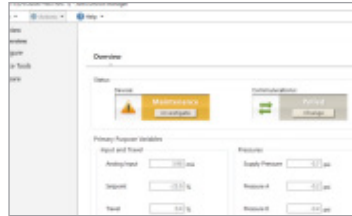
Alert Monitor

Provide a view of all device alerts and access additional device information for more details.



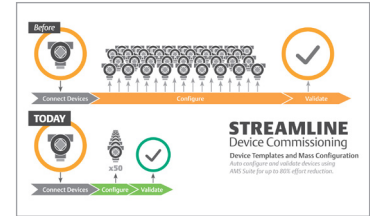
Device Configuration

Change, store, compare, and transfer device configurations using a single asset management system.



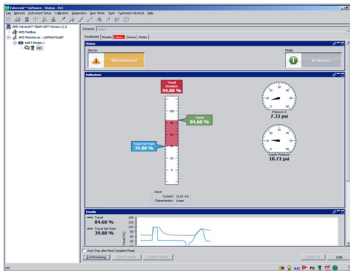
Smart Commissioning

Define parameters for multiple devices and set configurations in bulk.



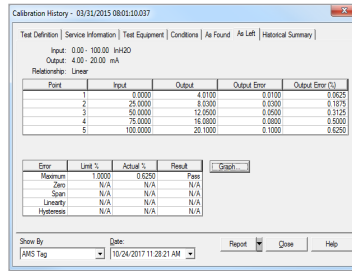
Diagnostic Capabilities

Access predictive diagnostics to deliver a more comprehensive account of the health of your field devices.



Calibration Solutions

Support the definition of device test schemes, device calibration scheduling, and the management of device calibration data.



Maintain Accurate Data

Use AMS Trex Auto Sync technology to maintain the data integrity of your database without technician intervention.



Field Device Integration (FDI)

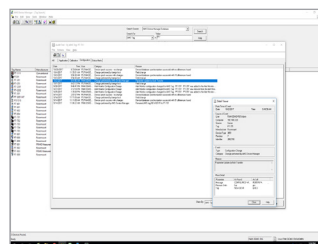
FDI is designed to meet plant needs including ease of device maintenance, investment protection, and security.

FDI device packages have all of the device information in one place providing a more efficient way to set up and access advanced diagnostics of complex devices.



Automated Documentation

Use Audit Trail to capture all activities in AMS Device Manager such as alerts, device changes and system events.



ValveLink™ SNAP-ON™

With the ValveLink SNAP-ON application, you can quickly run run valve diagnostics to identify issues before they impact operations. These insights help you target only the valves that truly require rebuilds during turnarounds, maximizing maintenance efficiency and resource use.



Contact Us
🌐 www.emerson.com/contactus

©2026 Emerson. All rights reserved.

The Emerson logo is a trademark and service mark of Emerson Electric Co. The AMS logo is a mark of one of the Emerson family of companies. All other marks are the property of their respective owners.

The contents of this publication are presented for informational purposes only, and while diligent efforts were made to ensure their accuracy, they are not to be construed as warranties or guarantees, express or implied, regarding the products or services described herein or their use or applicability. All sales are governed by our terms and conditions, which are available on request. We reserve the right to modify or improve the designs or specifications of our products at any time without notice.

AMS™

