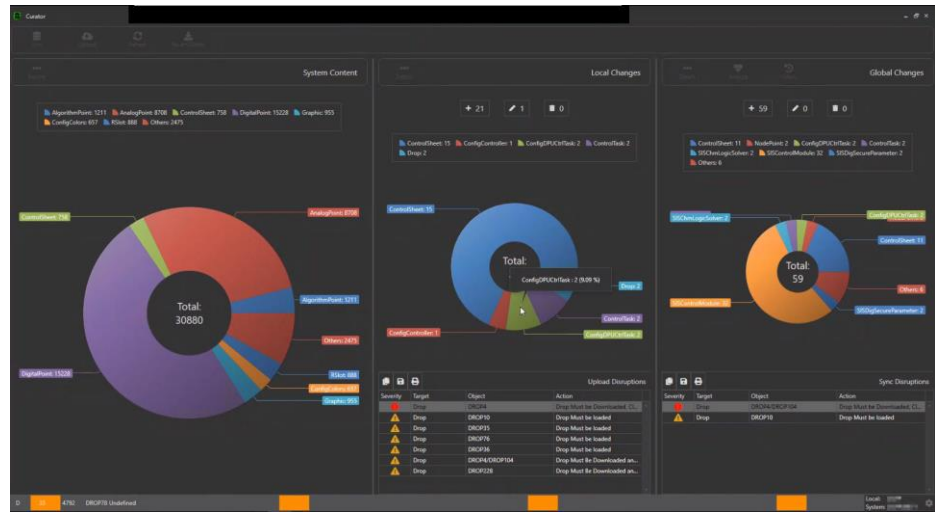


# Ovation™ Curation Tool

## Features

- Provides visual indication and display of specific changes to the configuration of the Ovation production and simulator systems.
- Leverages proven technology for change management and synchronization.
- Tracks changes to the system over time. You can see details of what changed, view past versions, and so forth.
- Enables deployment of changes between multiple instances of the same unit's control system in an automated fashion. For example, a change made to the production system Distributed Control System can be deployed to the simulator, and vice versa.
- Displays differences between two systems. You can review what has changed in Ovation before deploying those changes to another system. The Curation Tool details the disruptions that those changes will cause to a system and suggests how to resolve them.
- When used on a production Ovation system that is not connected to a simulator, it can create a comparison to see what changes were made over time.



Curation Tool interface

## Introduction

The Ovation Curation Tool application provides a streamlined way for expert Ovation users to maintain version control and detailed change history between one or more Ovation systems and simulators. As opposed to traditional database repositories, which simply store and search large amounts of data, the Curation Tool also manages and accounts for changes and merges of assets over time.

The Curation Tool works with your Ovation production systems. It can also be connected between your Ovation production and simulation systems to manage assets and maintain a history of changes. The Curation Tool manages, tracks, and organizes the history of changes to the Ovation database, graphics, control sheets, and other system variables.

Using a system of repositories, the Curation Tool moves data between the production system and the simulator, while maintaining synchronization of the data. Multiple users can edit the same assets and merge those asset changes together.

When installed on a production Ovation system not connected to a simulator it can be used to perform a comparison to see what changes were made to the Ovation system. At any time, you have the ability to review the current Ovation system configurations with the configuration of past synchronizations. If needed, you can revert changes back to previous revisions.

The Curation Tool uses three repositories to house and transfer data and changes:

- System Content – A copy of the contents of the current Ovation database
- Local Repository – A holding space where data is compared and reconciled before being committed
- Global Repository – The long-term storage for historical data

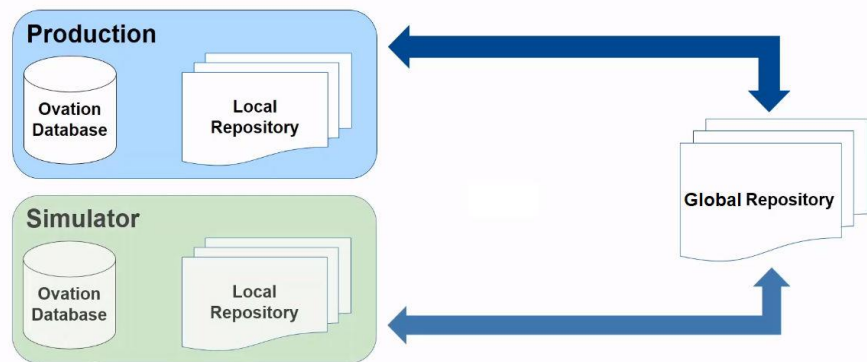
The Curation Tool interface provides visual representations of the Ovation database, Local Repository, and Global Repository, as well as access to operations and historical information. From this interface, you can view the contents of the repositories side-by-side, compare changes, and resolve conflicts before transferring data.

## Streamlined workflow

The Curation Tool workflow is streamlined to include only a few basic operations.

In the typical workflow, the Synchronization operation copies data from the current, local Ovation database to the Local Repository. In the Local Repository, any potential conflicts between old and new data changes are reconciled.

Once all data change conflicts are resolved, the Upload operation transfers the data changes from the Local Repository into the Global Repository. The process can also work in reverse to transfer data from the Global Repository back to the same Ovation system or to a different Ovation system.



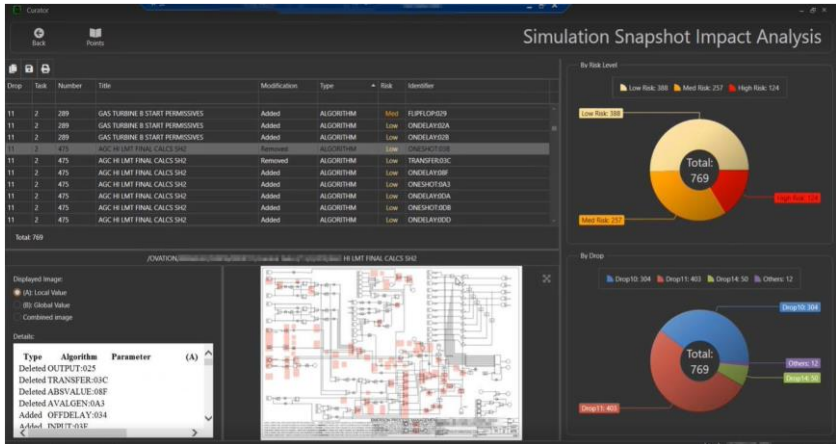
*Typical flow of data between repositories*

## Simulation Snapshot Impact Analysis

The Simulation Snapshot Impact Analysis tool provides analysis of potential changes for risks and impacts to current simulation snapshots and control sheets. For control sheets, the tool takes a snapshot of values and static data for a specific point in time.

Impacts analyzed include:

- Adding new inputs and outputs.
- Adding new algorithms with local memory.
- Looping a transfer back to itself.
- Adding a new user-defined point to an algorithm.



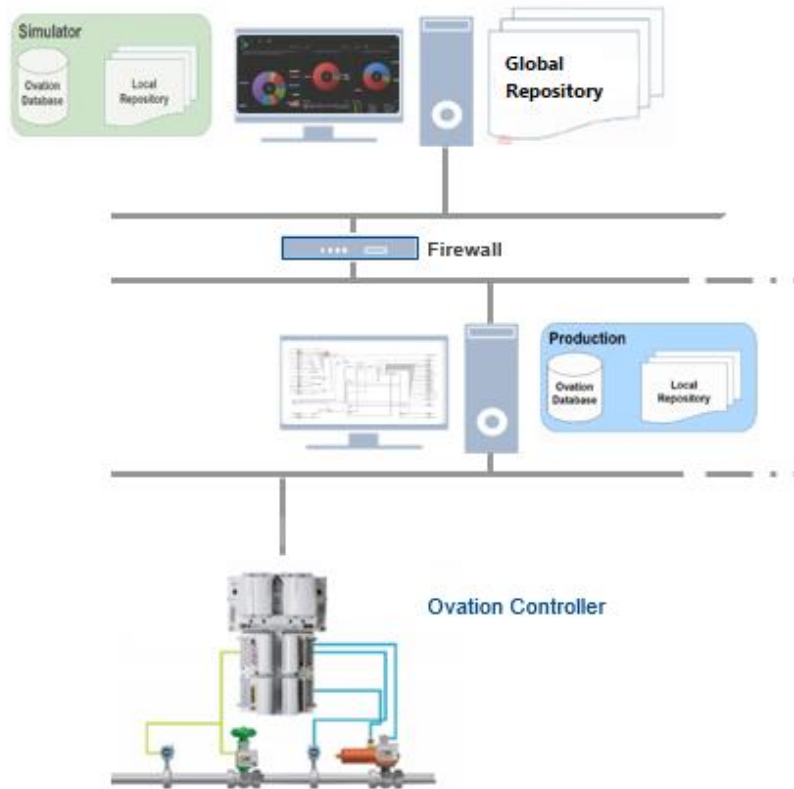
Simulation Snapshot Impact Analysis Tool

Two pie charts provide a visual overview of affected drops by risk level and location. A list of modified drops accesses a deeper level of before-and-after comparison information.

## Deployment configuration

In the typical Curation Tool deployment, a dedicated NIC on the Ovation database server connects to the Global Repository. A dedicated NIC on the simulation system database server also connects to the Global Repository. This isolates the traffic so that it is not residing on the Ovation network.

Each Ovation database server has a Local Repository. Separately, the Global Repository resides elsewhere; it is shared between all Ovation systems with the same data set within the Local Repository. The Global Repository is either a Network Attached Storage (NAS) unit, a file server, or a webserver hosting the Global Repository.



*Example deployment configuration*

## Licensing Information

The Ovation Curation Tool addresses a variety of use cases for Ovation systems deployed in Production and Ovation Digital Twin deployments.

Use Case	Product	Licensing Options
Maintain version control and detailed change history for production systems.	Ovation Curation Tool	Term-License 1, 3, 5-year term lengths
Maintain version control and change history between production systems and simulator systems.	Ovation Digital Twin Curation Tool	Term-License 1, 3, 5-year term lengths  NOTE: Curation Tool license entitlement is included with Ovation Digital Twin subscription or can be sold separately for perpetually licensed Ovation Digital Twin systems.

\*Refer to the Ovation Digital Twin Solutions Overview data sheet for more information.

Software offered on a term-license subscription basis includes term-based software licenses with integral software maintenance and product support, subject to a license agreement. With an active subscription, product support for the specific software allows access to software updates and various types of software support through the Guardian™ portal.

**Subscription-based software maintenance** includes updates to the software during the subscription term for enhancements or to fix minor issues. With an active subscription, support provides access to the latest software versions which are available for electronic download. Product-specific software maintenance and support as part of a software subscription may vary and is documented in the relevant product data sheets and is also described on the Guardian™ portal.

**Subscription-based software support** includes access to basic telephone support where engineers and experts provide telephone support as needed in case of any problems related to software use or functionality. With an active subscription, other forms of software support are available through the Guardian™ portal, including unique support elements for each software product. Licensed software is subject to a [software license agreement](#) and corresponding [product-specific terms & conditions](#). Subscription software provides certain software entitlements over the subscription term along with access to support resources. [Support for Subscription Software \(emerson.com\)](#)

## Related Products & Services

### Ovation Digital Twin Solutions

Ovation Digital Twin Term-License Subscription: In addition to having access to all the latest versions of software and related to the Ovation Digital Twin software such as Ovation software, Virtual Controller software, and Training Center software, customers also have access to the Curation Tool software to help keep systems up to date with the production system. The Curation Tool software requires the purchase of 2 weeks per year of remote tuning services which is used to keep the systems up to date with the least amount of effort without having to manage a separate maintenance contract. The remote tuning service is used to update and tune any simulation models that were affected by any changes to the plant, and to update any simulation snapshots.

©2026 Emerson. All rights reserved. The Emerson logo is a trademark and service mark of Emerson Electric Co. Ovation™ is a mark of one of the Emerson Automation Solutions family of business units. All other marks are the property of their respective owners. The contents of this publication are presented for information purposes only, and while effort has been made to ensure their accuracy, they are not to be construed as warranties or guarantees, express or implied, regarding the products or services described herein or their use or applicability. All sales are governed by our terms and conditions, which are available on request. We reserve the right to modify or improve the designs or specifications of our products at any time without notice.

Emerson strives to deliver products, services, and documentation that reflect our commitment to diversity and inclusion. Some publications, including software and related materials, may reference non-inclusive industry terms. As diversity and inclusive language continue to evolve, Emerson will periodically re-assess the usage of such terms and make appropriate changes.